

PART OF THE EAST 1/2 OF SEC. 9, T.6N., R1W., S.L.B. & M.
THE VILLAGE OF MOUNTAIN ROAD PLAT A

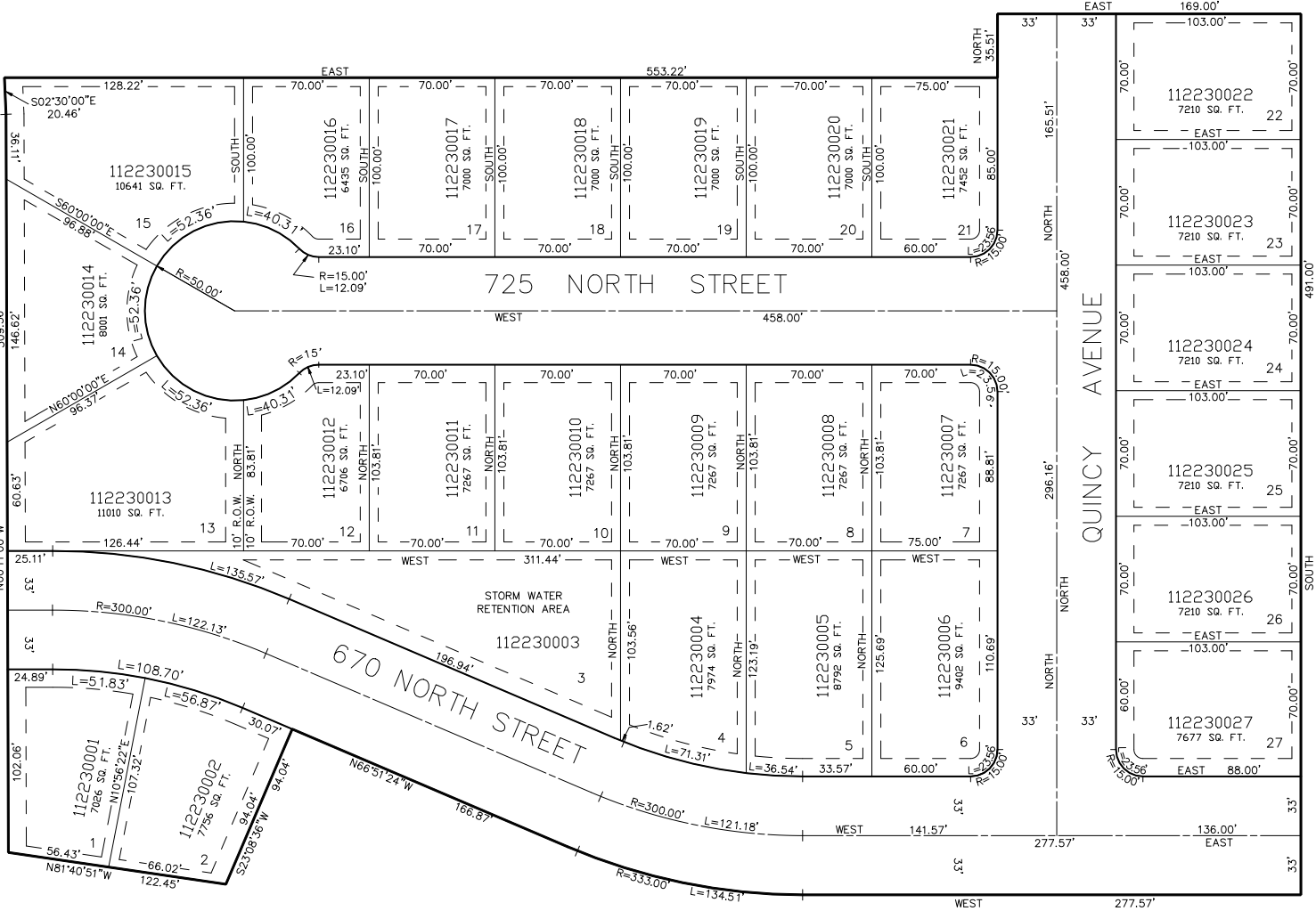
TAXING UNIT: 25

IN OGDEN CITY
SCALE 1" = 50'

SEE PAGE 44-1

SEE PAGE 62

SEE PAGE 66



SEE PAGE 44-1

SEE PAGE 71

SEE PAGE 71

PUBLIC UTILITY EASEMENTS:
SIDE LOT LINES- 5.0' EACH SIDE
REAR LOT LINES- 10.0'
FRONT LOT LINES- 10.0'

FOR COMPLETE ENG DATA SEE
ORIGINAL DEDICATION PLAT IN
BOOK 41, PAGE 40 OF RECORDS.